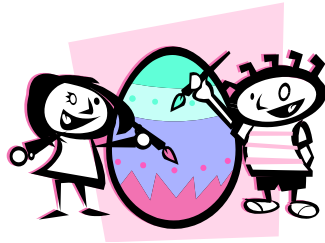


Barfoot & Thompson Stadium

Kohi Kids - Winter Holiday CLUB



Enrol Online - Website: www.barfootstadium.co.nz

October 2019

8am - 3pm / 3pm - 6pm

Limited Spaces - Pre-Booking Essential

Payment prior to programme commencing

Please make cheques payable to 'East City Community Trust' or
Direct Credit Payments to ASB Bank 12-3011-0815604-04

After care is available between 3 - 6pm, at
an additional cost of **\$15 per child**
(this includes afternoon tea)

Telephone 521-0009 (extn 4) Mb 021-896620

Email afterschool@eastcitytrust.org.nz P O Box 25-120, St Heliers

Mon 30th Sept 2019
8am - 3pm
\$55

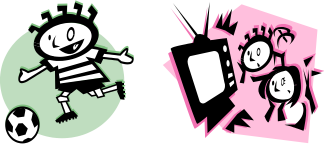
Gravity Trampoline Park



Bring a packed lunch

Choose any of the following options for the Afternoon:

Sports DVD's



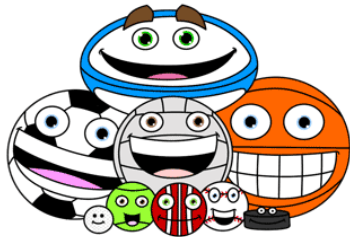
Playstation / Wii

Tues 1st Oct 2019
8am - 3pm
\$50



Paint & Create

Bring a
Packed Lunch



SPORTS

Wed 2nd Oct 2019
8am - 4pm
\$80

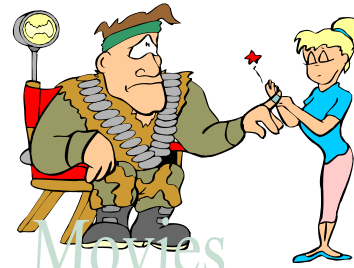
Rainbows End



Bring a
packed lunch
(Spending Money optional)

Thur 3rd Oct 2019
8am - 3pm
\$44

Movies (Money Optional)



Movies

Movies

Catch the latest Flick at
the Berkeley Movie
Cinema

Sports DVD's



Playstation / Wii

In the afternoon ☺



Bring a Packed Lunch

Friday 4th Oct 2019
8am - 3pm
\$45

Sports Day



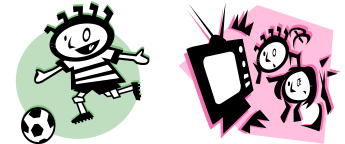
Bring a packed lunch



Lollie Scramble!

Choose any of the following options for the Afternoon:

Sports DVD's



Playstation / Wii

Mon 7th Oct 2019
8am - 3pm
\$55



Extreme
Edge
Rock
Climbing

Bring a
Packed Lunch

Tues 8th Oct 2019
8am - 3pm
\$43



TEAM SPORTS

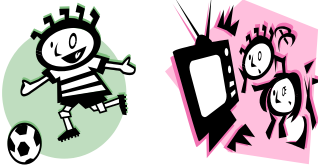
Bring a Packed Lunch

Have Ice-cream



Wed 9th Oct 2019
8am - 3pm
\$57

Sports DVD's



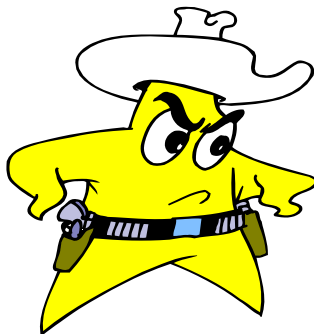
Playstation / Wii

In the Morning ☺



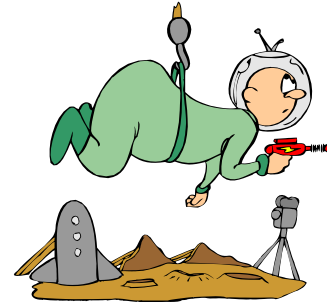
Bring a Packed Lunch

2 Rounds of
Laser Strike



Thur 10th Oct 2019
8am - 3pm
\$44

Movies
(Money Optional)



Bring a packed lunch

Sports



Or Freetime in the Stadium

Frid 11th Oct 2019
8am - 3pm
\$47

**Wheels
Day**



Bring your bike, scooter,
skateboard or roller blades for
a fun day on Wheels!

Pizza for Lunch

